

VUDOO GUN WORKS



Owner's Manual for 1911 Handguns





Welcome To **VUDOO GUN WORKS**

Our Commitment To You

“We envision and create the exceptional, employees with passion, products that exceed customer expectations and relationships based on respect and consideration.”

CUSTOMER SERVICE:

If for any reason you are unhappy with a Vudoo Gun Works product, Vudoo Gun Works service, or how your issue has been addressed by an employee of Vudoo Gun Works, feel free to contact our Customer Service Director at:

info@vudoogunworks.com.

RETURN OR EXCHANGE:

In the event that you need to return or exchange a product, please email:

**info@vudoogunworks.com
or call 435-359-2890.**

REPAIR:

For handguns service repair work, please contact:

info@vudoogunworks.com

“Attn: Service Repairs”

Tech questions: 435-359-2890

QUESTIONS:

For answers to frequently asked questions, a complete list of available handguns, parts, accessories, services and upgrades, or to find a Vudoo Gun Works dealer near you, please visit our website:

www.vudoogunworks.com



TABLE OF CONTENTS

2	Welcome
4-6	Handgun Warning/ Disclaimer
8	1911 Overview
9-13	Handgun Safety Rules
14	Locking Devices Warning
15-17	Function Test
18	Before Firing Warning
19	Clearing Malfunctions
20-22	Loading, Firing, & Unloading
23	Field Stripping Disassembly/Reassembly
26-27	Recommended Maintenance
28	1911 Parts List
29	Slide Assembly
30	Frame Assembly
31	Trigger Group & Mainspring Assembly
32	Ownership Record/ Notes



DISCLAIMER AND LIMITATION OF LIABILITY

Understanding the basic function of and dangers presented by the use of your handgun, and closely following the instructions and warnings set forth in this manual will help you obtain a high level of safety, performance, and satisfaction. On the other hand, failure to follow the instructions and warnings in this manual can result in serious injury and even death to yourself or others, as well as severe damage to the handgun or other property.

Voodoo Gun Works shall not be responsible for damage to the handgun, physical injury to yourself or others, or property damage caused by any of the following: negligent or criminal discharge of your handgun; improper or careless handling; unauthorized alterations or modifications; use of low quality or improperly reloaded ammunition; failure to properly maintain and service the handgun, including permitting rust or corrosion accumulation, and abuse, neglect, or other conditions that are beyond Voodoo Gun Work's control.

The above legal limitations apply regardless of whether liability against

Voodoo Gun Works is asserted based on warranty law, contract, negligence, or strict liability (including failure to warn). Under no circumstance shall Voodoo Gun Works be liable for incidental or consequential damages, such as the loss of use of property, commercial loss, and loss of earnings or profits.

Voodoo Gun Works does not offer any written or express warranties on its products. Voodoo Gun Works reserves the right to assert any additional defense(s) available under applicable law.

By owning, maintaining, storing, handling and shooting this handgun, you are accepting a serious responsibility. Please take the time to review and understand this entire manual. Always follow common sense. Anyone using your handgun must do so safely. If you or any of the handgun's handlers have any doubts about the ability to safely and responsibly own, maintain, store, handle, and shoot the handgun, supervised and professional instruction should be immediately sought.



DISCLAIMER AND LIMITATION OF LIABILITY CONT.

WARNING: PROPER GUN HANDLING TECHNIQUE

Dropping the slide from slide lock with an empty chamber will damage your new 1911 pistol! Repeated dropping of the slide from slide lock on an empty chamber will eventually damage the hammer/sear engagement to the point that the hammer will fall to half cock and peen the barrel lock-up contact areas resulting in loss of accuracy. You should NEVER drop the slide from slide lock on an empty chamber with ANY pistol design for the above reasons, but this is especially true on any precisely fit pistol of 1911 design. Only drop the slide from slide lock when you are chambering a cartridge from the magazine. The feeding of the cartridge from the magazine into the chamber reduces the impact of the slide slamming closed. This is the way the pistol is designed to be operated and will result in a long lasting, accurate pistol with a crisp and safe trigger pull. Damage to the pistol from dropping the slide from slide lock on an empty chamber will not be covered under the Voodoo Gun Works service policy.



WARNING

BEFORE USING THIS HANDGUN, READ, UNDERSTAND, AND FOLLOW THESE INSTRUCTIONS. THIS HANDGUN SHOULD BE CONSIDERED LOADED AND READY TO FIRE UNTIL YOU REMOVE THE MAGAZINE AND VERIFY THAT THE CHAMBER IS UNLOADED.

If there is anything you do not understand, get assistance from a qualified firearms instructor in the safe handling and maintenance of handguns.

This instruction manual should always accompany this handgun and be transferred with it upon change of ownership, or when the handgun is loaned or presented to another person.

Nothing can ever take the place of proper instruction and training. We recommend beginning with an NRA training course near you.

For more information nrainstructors.org/.



CLASSIC, FULL-SIZE, 1911





HANDGUN SAFETY RULES

There are no excuses for careless handgun handling. The following rules are common sense and must be followed at all times. If you do not understand these rules, please contact Voodoo Gun Works at 435-359-2890 or e-mail us at info@vudoogunworks.com. Do not use your Voodoo Gun Works handgun until you fully understand and practice these rules. If these rules are ALWAYS followed, your handgun will provide you with many years of safe and enjoyable use. Failure to follow these rules can cause property damage and serious personal injury or death to yourself or others.

Always keep your handgun's muzzle pointed in a safe direction.

A safe direction is one in which an accidental discharge will not cause injury to yourself or others. Never allow your handgun to be pointed at anything you do not intend to shoot. Be extra careful when you are loading or unloading. Injuries can be prevented in the event of an accidental or unintentional discharge if you keep your handgun pointed in a safe direction. Treat every handgun as if it were loaded, regardless of whether it is loaded or unloaded and whether the mechanical safety is engaged. Your handgun's mechanical safety is not a substitute for common sense.

Your handgun should be unloaded and properly stored when not in use.

Load your handgun only after you are in the field or on the target range and ready and intending to fire. Unload your handgun as soon as you are finished shooting. An unloaded handgun cannot cause an accident. Unload your handgun completely, which means no ammunition in the chamber or in the magazine. Never assume a handgun is unloaded even if you were the last person to use it.

HANDGUN SAFETY RULES CONT.

When not in use, store this handgun where it is not accessible to unauthorized persons. Safe storage of a handgun is just as important as safe handling. Never store your handgun loaded. Be sure to keep your handgun in a secure place where unauthorized persons and children cannot gain access without your knowledge. Take extra precaution if children are nearby. Store your handgun in a locked safe or some other location that physically prevents unauthorized persons and children from gaining access. Ammunition should be stored and locked in a location separate from your handgun. It is your responsibility to make sure that children and others unfamiliar with handguns cannot access your handgun and ammunition.

NOTICE: When using a key operated locking device, never install the locking device inside the trigger guard or in a way that makes it possible for the locking device to pull the trigger. Do not leave the keys in the lock. To maximize effectiveness and reduce the chances of malfunction or damage to your

handgun, refer to the locking device manufacturer's instructions for installation and removal.

Keep your fingers off the trigger until you are ready and intending to shoot.

Do not touch the trigger on your handgun until you are ready and intending to shoot. Keep your fingers away from the trigger when you are loading or unloading. Even if the safety is engaged, do not touch or pull the trigger until you are ready and intending to shoot. Keep your finger outside the trigger guard until you are ready and intending to shoot.

Use only quality ammunition of the correct caliber in your handgun.

Your handgun is designed to fire a particular caliber of ammunition. The specific caliber is engraved on the handgun. Never attempt to shoot ammunition of any other caliber. Never attempt to shoot dam-

HANDGUN SAFETY RULES CONT.

aged, abused, altered, corroded or improperly reloaded ammunition. Using the wrong caliber ammunition or using damaged, abused, altered, corroded or improperly reloaded ammunition can cause serious personal injury or death. Always read and follow the instructions on ammunition boxes.

Be sure that your handgun and ammunition are in good working condition.

Before firing your handgun, you should always inspect and check that it is functioning as designed and intended. It should only discharge when the safety is disengaged, and the trigger is pulled or depressed. The instruction manual that accompanies this handgun includes instructions on how to properly check whether the handgun is in proper working order.

Before loading your handgun, open the action and make sure there is no ammunition in the chamber or magazine. Check your barrel for any obstructions or debris. (Use

common sense, and do not look down the muzzle!) Even a small amount of debris, dirt, mud or excess lubricant in the barrel can cause dangerous increases in pressure and result in the barrel exploding during firing. Use a cleaning rod to clear debris or obstructions in the barrel. If the noise, report, or recoil of your handgun seems abnormal or reduced, stop and unload your handgun. A bullet that fails to completely exit the barrel is known as a “squib” load, which is a bore obstruction and extremely dangerous condition.

If for any reason ammunition does not fire when you pull the trigger or something appears wrong with the ammunition, stop what you are doing. Use common sense. Keep the handgun’s muzzle pointed in a safe direction. Keep your face away from the ejection port. Engage your safety. Wait at least 30 seconds before carefully opening the action to unload the handgun. Carefully dispose of the cartridge. Remember that anytime a cartridge is in your handgun’s chamber, your handgun is loaded and can fire.

Always wear eye and ear protection when shooting.

Shooting glasses help protect your eyes from powder residue, ruptured or damaged cartridge cases, and other debris. Eye protection is also recommended when you are disassembling, cleaning, or reassembling your handgun so that tensioned parts, such as springs, and cleaning solvents do not contact your eyes.

Hearing protection is also important because exposure to shooting noise can permanently damage your hearing. Whether at the range or in the field, use ear protection.

Be sure of your target and what is beyond it.

When you are ready and intending to shoot, but before you pull the trigger, you must know your target and what is beyond it. Your shot should have a solid backstop. Make sure that you know exactly where your shot is traveling and what it will hit if you miss your target. Bul-

lets travel with great velocity over significant distances. Know how far your shot will travel if you miss your target or if the bullet ricochets.

Never use alcohol or drugs before or during shooting.

Never shoot while intoxicated or on drugs. You must shoot sober to effectively follow the rules of handgun safety. Handguns and alcohol or drugs are an extremely dangerous combination. Never consume anything that could impair your judgment or physical coordination when shooting or handling a handgun.

Do not alter or modify your handgun and have it regularly serviced.

An improperly altered, modified, or poorly maintained handgun is a dangerous handgun. Your handgun has been designed to operate in accordance with specifications developed by Voodoo Gun Works. Never alter or modify your handgun in any way. You may endanger



HANDGUN SAFETY RULES CONT.

yourself and others by altering or modifying your handgun's trigger mechanism, the mechanical safety, or any other component.

Like most mechanical devices, your handgun is subject to wear, and should be maintained and regularly serviced. Proper cleaning and lubrication are important and necessary for optimal performance, safety and reliability. Before cleaning, always make sure that your handgun is completely unloaded. Periodically inspect the internal workings of your handgun to make sure they are clean and free of rust and debris. Use only recommended lubricants and do not over lubricate. Excessive use of non-recommended lubricants can adversely affect the function and safe operation of your handgun.

You are responsible for the proper care and maintenance of your handgun. Failure to properly maintain your handgun can result in damage to the handgun and cause personal injury or death.

Learn the mechanics and handling characteristics of the handgun before use.

Not all handguns are alike. They have different mechanical characteristics that impact how you should operate and handle them. Anyone who plans to use a Vudoo Gun Works handgun should first familiarize themselves with the handgun and the safe handling procedures for loading, unloading, shooting, and storing it. Before you ever load your handgun, read this entire instruction manual and familiarize yourself with the different component parts and features of the handgun and the handgun's handling characteristics.

As a handgun owner, it is your job to know the local, state, and federal laws regarding handguns ownership. The warnings listed in this manual are not inclusive of all states and is subject to change without notice. Please check with your local authorities for current laws and regulations in your locality.



LOCKING DEVICES WARNING

While it can help provide secure storage for your unloaded handgun, any key-operated locking device can fail. All handguns are designed to fire if they are loaded and the trigger is pulled. Therefore, never install the locking device inside the trigger guard or in any way that makes it possible to pull the trigger! Do not leave the keys in the lock.

The ultimate responsibility for secure storage of any handgun must depend upon its owner and his or her individual circumstances. Handguns should be stored unloaded, in a secure location, separate from their ammunition.

NEVER Install The Locking Device Inside The Trigger Guard

To maximize effectiveness and reduce the chance of malfunction or damage to a handgun, ALWAYS refer to the locking device 's manufacturer direction for installation and removal of the device.

WARNING: Keep the handgun out of the reach of children or other unauthorized persons. Store the key to the cable lock in a safe place, away from unauthorized persons and separately from the handgun.

WARNING: If this handgun is carelessly or improperly handled, unintentional discharge could result and could cause injury, death, and/or damage to property.

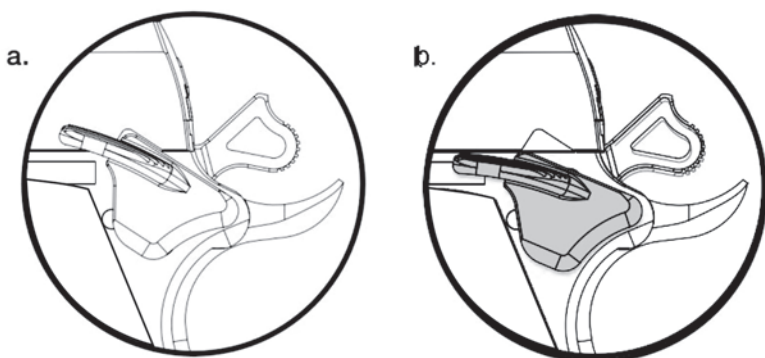
FUNCTION TEST

The following function test is intended to ensure the handgun is safe and in proper working order. You should perform the following safety and function tests any time after disassembly/reassembly and before/after carrying or firing the firearm.

If the handgun fails any step of this function test, see warning instructions on page 24. To ensure that the handgun is in proper working order, a function test should be completed as follows:

Thumb Safety Check

The thumb safety on a 1911 style pistol blocks the sear when placed in the upward (SAFE)(a) position. To check your safety for proper function, with an unloaded firearm, place safety in the upward (SAFE)(a) position and pull the trigger. The safety should stay on SAFE(a) and the hammer should not move or fall. If the hammer falls, please contact Vudoo Gun Works® Customer Service.





FUNCTION TEST CONT.

Grip Safety Check

The grip safety on a 1911 style pistol blocks the trigger from moving unless the safety is completely depressed by the user's grip. To check your grip safety for operation, with an unloaded firearm, cock the hammer and with the thumb safety in the downward (FIRE)(b) position attempt to pull the trigger without depressing the grip safety. The hammer should not move or fall. If the hammer falls, please contact Vudoo Gun Works Customer Service.

Disconnecter Check

The disconnecter is an internal safety that prevents the pistol from firing fully automatic or out of battery. To check the disconnecter, with an unloaded but cocked firearm retract the slide $\frac{1}{4}$ - $\frac{1}{2}$ inch and pull the trigger. The disconnecter should be disconnected from the sear at this time and prevent hammer fall. If the hammer falls, please contact Vudoo Gun Works Customer Service.

Firing Pin Spring

The firing pin spring is what keeps your pistol safe from firing during an accidental drop on to a hard surface. To maintain drop safety, you should change your firing pin spring every 5,000 rounds of live fire or 5,000 dry fires. If you need help selecting the appropriate spring for your pistol, please contact Vudoo Gun Works Customer Service.

Half Cock

Vudoo Gun Works 1911 pistols retain a half-cock notch to prevent the pistol from firing during hammer follow. The half cock notch is a secondary, fail-safe design and half-cock should not be used as a safety or a condition of carry. To check your half-cock function, with an unloaded firearm, cock



FUNCTION TEST CONT.

the hammer to the half cock position. Attempt to pull the trigger using a full grip. The hammer should not move or drop. If the hammer drops from the half cock notch, please contact Vudoo Gun Works® Customer Service.

Hammer Follow

A Vudoo Gun Works 1911 has a finely tuned hammer and sear surfaces to provide you a safe but light and crisp trigger pull that will last the average shooter a lifetime. If these surfaces become damaged or lose adjustment you may experience the hammer following to half cock when the slide drops on an empty chamber. Because of this, it is never advised to slam or drop the slide on an empty chamber from the fully retracted or slide lock position. When handling a Vudoo Gun Works 1911 you should always ease the slide down on an empty chamber unless you are feeding ammunition from the magazine to load the firearm. If you experience hammer follow to the half cock notch while loading, handling or shooting your firearm please contact Vudoo Gun Works Customer Service.

WARNING: If the firearm fails any step of this function test, immediately contact Vudoo Gun Works for further instructions. Do NOT use the firearm unless it passes all steps of this function test. If you have any doubts or are unsure of the condition and performance of the firearm, do not use it and immediately contact Vudoo Gun Works. The failure of any aspect of this function test can mean the firearm is unsafe and not in proper working order. Use of the firearm in this condition could lead to poor performance and cause serious bodily injury or death.



BEFORE FIRING ANY HANDGUN

Be sure that the barrel is free from obstructions. Firing a handgun with an obstruction in the barrel could result in serious injury or death.

Confirm that your ammunition and the caliber of your handgun are compatible.

In case of a hang fire (an unexpected delay between the action of pulling the trigger and the ignition of cartridge propellant), keep your handgun pointed in a safe direction for at least 30 seconds. If after 30 seconds the cartridge has not fired, keep face away from ejection port, remove the magazine, clear the chamber, and examine the cartridge that did not fire. If there is a no indentation on the primer, a very light strike, or off-center strike on the primer, please call Voodoo Gun Works support. Dispose of unfired ammunition in accordance with the manufacturer's guidelines. If you suspect there is a bullet lodged in the barrel, disassemble the unloaded handgun and remove the barrel to confirm. If so, contact Voodoo Gun Works.

WARNING: Do not fire any handgun if a bullet is lodged in the barrel. Doing so creates extreme pressure and could result in serious injury or death. Never pull the trigger if the slide has not fully closed. This could induce an out of battery firing which can cause an escape of pressure toward the shooter and cause serious injury.



CLEARING MALFUNCTIONS

All semi-automatic handguns may experience a malfunction from time to time. Most malfunctions are caused by improper maintenance, out of spec ammunition, improperly maintained magazines or insufficient grip. To minimize the frequency of malfunctions, your handgun should be maintained in accordance with this instruction manual.

To clear a malfunction, always keep the handgun pointed in a safe direction. Always keep your finger outside of the trigger guard, take note of the type of malfunction so that remedial maintenance or repair can be performed if necessary. Retract the slide to its fully rearward position and lock it open. Remove the magazine and clear the malfunction using your fingers or a small wooden tool. (Metal tools should not be introduced into the action of a handgun as they can cause damage or detonate the primer of the cartridge.)

If you are unable to clear the malfunction, contact Voodoo Gun Works or your local gunsmith for further instructions.

LOADING YOUR HANDGUN

WARNING: The process for loading your handgun is simple, but if not done correctly, could be dangerous or deadly. Keep the gun pointed in a safe direction and your finger off the trigger during the entire loading sequence. Loading the handgun is done in three simple steps.

1. Load the magazine
2. Inserting the magazine into the handgun
3. Loading the chamber and activating the safety

Loading the Magazine

1. Hold the magazine in your non-dominant hand with the feed lips up, and the opening in the top of the magazine pointing outward.
2. With your shooting hand, insert a cartridge through the opening in the top of the magazine while pressing down on the spring-loaded follower. Press down and to the rear of the magazine until the cartridge is positioned completely in the magazine. The base of the cartridge should rest against the rear of the magazine. Repeat until the magazine is full.

Inserting the Magazine

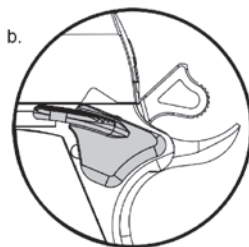
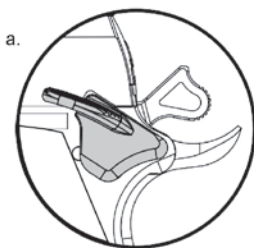
1. Hold the handgun in your shooting hand with it pointed in a safe direction.
2. Insert the magazine into the magazine well of the handgun, with the tip of the ammunition pointed forward, until the magazine locks into place.

WARNING: While loading, keep the muzzle of the handgun pointed in a safe direction with the safety in the FIRE (down) (b) position, finger off the trigger and outside the trigger guard. The slide will not retract, and you will not be able to load the handgun if the safety is in the SAFE (up)(a) position.

Loading the Chamber and Activating the Safety

1. Pull the slide fully back and visually inspect the chamber for any obstructions.
2. Load the chamber by releasing the slide allowing the slide to snap back into the forward position on its own. Do not slowly lower the slide or interfere with its forward movement in any way.
3. Move the thumb safety to the SAFE (up)(a) position until you are ready to fire the handgun.

The gun is now ready to fire and should always be pointed in a safe direction. Do not shoot your handgun unless you are sure of your target and what exists beyond and behind it.



WARNING: Death, serious bodily harm, or malfunctions may occur by using incorrect, out of spec, or low quality ammunition in your handgun.



LOADING, FIRING, & UNLOADING

Once you are sure of your target and what is behind it, you may now fire the handgun when ready. Keep your finger off the trigger until you are ready to fire. Align your sights correctly on the target. When ready, move the thumb safety to the FIRE (down) (b) position and pull the trigger straight to the rear without disturbing the sight alignment. Repeat as necessary.

When you are done shooting, unload the handgun and move the thumb safety to the SAFE (up)(a) position or point the handgun in a safe direction and dry fire the handgun to lower the hammer to its forward position against the back of the slide.

UNLOADING

WARNING: The process for unloading your handgun is simple, but if not done correctly, could be dangerous or deadly. Unloading the handgun is done in three simple steps.

1. Remove the magazine.
2. Retract the slide to unload the chamber.
3. Visually and physically confirm there is not a cartridge in the chamber, and the magazine is not in the handgun.



FIELD STRIPPING DISASSEMBLY / REASSEMBLY

WARNING: Wear adequate eye protection when disassembling this or any handgun.

1. Remove magazine, retract slide, and visually inspect chamber to ensure your pistol is unloaded.
2. Lower slide and engage thumb safety.
3. Depress recoil spring plug with a non-marring bushing wrench and slowly rotate bushing clockwise while capturing the recoil spring plug.
4. Slowly ease the plug out of the slide and set aside. This assembly is under heavy spring tension-always wear safety glasses and point in a safe direction.
5. Disengage thumb safety, align slide until the slide lock aligns with the rear takedown notch (half-moon cut out on slide) and push the slide stop shaft from right to left and set aside.
6. At this time you can remove the slide assembly from the frame.
7. Remove the recoil spring, barrel bushing, barrel, and recoil spring plug from the slide assembly. If the bushing is a tight fit in the slide, use the barrel to tap the bushing out of the slide with light tapping.

The pistol is now field stripped for normal cleaning and lubrication.

Reassemble in reverse order as shown above. For more information refer to our website www.vudoogunworks.com or our YouTube channel for helpful tips on how to operate, clean and maintain your firearm.



RECOMMENDED MAINTENANCE

Your handgun was fired during the manufacturing process by a professional test shooter to ensure its reliability. To make your first range trip a pleasant one, use full power, standard velocity brass cased factory ammo and adequately lubricate prior to shooting. To meet our stringent accuracy guarantee, our handguns are built to tight tolerances and will require regular lubrication and cleaning at recommended intervals for best function.

1. Closely inspect your handgun upon receipt.
2. Prior to your first range trip, adequately lubricate all bearing surfaces with Lucas Oil or equivalent.
3. Quickly lubricate by locking the slide back and adding a few drops of oil to the slide rail grooves (a), barrel chamber area (b), muzzle area (c) and then hand cycle to adequately disperse lubricant.

Every 300-500 Rounds:

- Field strip, quick clean, wipe internal bearing surfaces with solvent and rag and re-lubricate. Clean external surfaces with a silicone rag to prevent corrosion.

Every 5000 Rounds:

- Detail strip entire pistol. Clean all parts well and inspect each for wear. Check extractor tension to ensure your extractor firmly holds a case. Replace firing pin spring with new to ensure drop safety. Replace recoil spring with appropriate weight spring. Detail strip video instructions can be found on www.vudoogunworks.com.

Recommended Lubricant:

- Light weight oil such as those available from Lucas oil.



RECOMMENDED MAINTENANCE

For Reliable Function, It Is Advised To Clean Your Handgun Thoroughly As Soon As Operation Becomes Sluggish Or Impaired.

1. Apply Carbon Remover or Bore Cleaner to internal areas of the disassembled handgun that are caked with fouling or carbon.
2. When cleaning the bore, use slow complete strokes (full length of bore) with a properly sized nylon brush. Allow to stand for 3 to 5 minutes then wipe clean with a dry patch.
3. Wipe away dirt and fouling on the interior and exterior of the handgun with non-abrasive patches or swabs.
4. After cleaning, lightly lubricate the moving parts of the handgun with Lucas Light Oil. Make sure to lubricate the barrel locking surfaces and frame/slide rails.
5. You are now ready to reassemble the handgun.

We only recommend high quality, standard pressure or +P ammunition. The use of +P+ ammunition or any ammunition outside SAAMI specifications is not advised and may cause excessive wear and tear or cause reliability issues.

RECOMMENDED MAINTENANCE

Firing Pin Removal

We recommend occasional removal of the firing pin for cleaning of the firing pin channel and firing pin spring replacement.

WARNING: Wear eye protection at all times when servicing the handgun. Modern hand guns contain springs that are under compression and can eject with significant striking force causing eye or other bodily injury. If any handgun component begins to show dam age, unusual or excessive wear, or breakage, stop using the handgun immediately and contact Vudoo Gun Works.

Before removing the firing pin and stop, make sure that the rear of the slide is pointed in a safe direction.

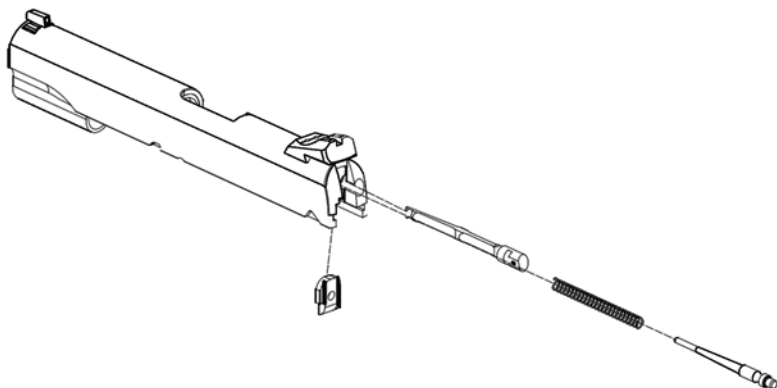
1. While firmly holding the rear of the slide, depress the firing pin with a 1/8" punch tool; releasing the spring tension holding the stop in place.
2. Use your finger to retain the firing pin while sliding the stop down and out of the way. This will keep the firing pin from ejecting from the slide.
3. Slowly allow the firing pin spring to release its compressed spring tension and then remove it from the slide.
4. Remove the firing pin spring from the firing pin by turning the firing pin clockwise and firmly pulling off the spring.

Reinstall the firing pin by reversing the instructions.

1911 Extractor Removal/Cleaning

To remove the extractor, first, remove the slide from the pistol. You can remove the barrel and recoil system and set aside. Using a non-marring punch or similar tool, push your firing pin in and simultaneously lower firing pin stop down and out of the pistol-Caution-your firing pin is under spring tension and must be captured during this operation. Set firing pin assembly and firing pin stop aside. Using a non-marring punch, remove extractor from the rear of the slide. In calibers with smaller case heads than .45 ACP, you will need to start the claw of the extractor in the extractor tunnel at the breach face with a non-marring punch or tool and then you will be able to pry it out of the tunnel. Clean extractor well with Carbon Remover or Bore Cleaner and clean extractor tunnel with a .22 caliber bore brush. Reassemble in reverse order, taking care not to bend the extractor during this process.

Test your extractor by placing a dummy round under your extractor hook. Your extractor should hold an empty case firmly at a 90 degree angle.



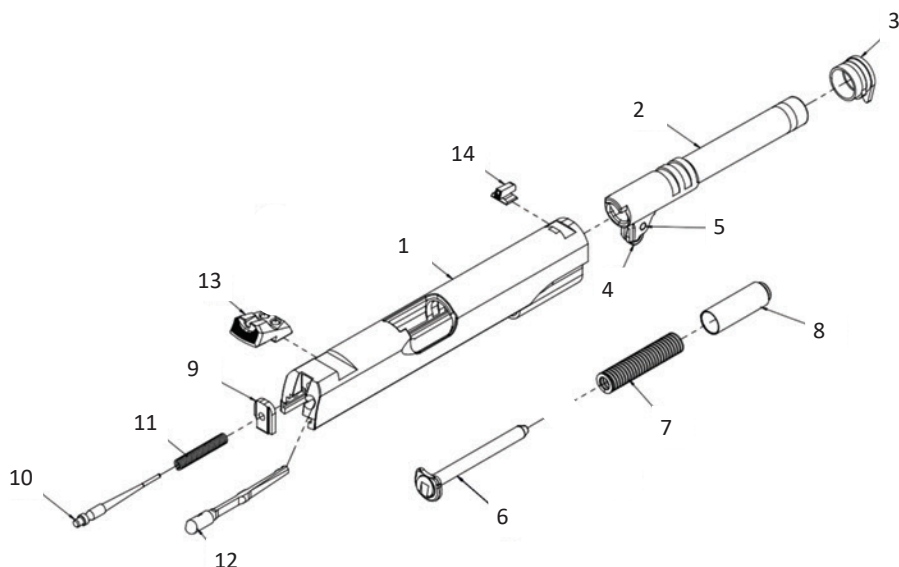


1911 HANDGUN PARTS LIST

1. Slide
2. Voodoo Match Grade Barrel
3. Barrel Bushing
4. Barrel Link
5. Barrel Link Pin
6. Guide Rod
7. Recoil Spring
8. Recoil Spring Plug
9. Firing Pin Stop
10. Firing Pin
11. Firing Pin Return Spring
12. Extractor
13. Rear Sight
14. Front Sight
15. Frame
16. Mainspring Housing Pin
17. Plunger Tube
18. Slide Stop Plunger
19. Plunger Tube Spring
20. Safety Plunger
21. Slide Stop
22. Ejector
23. Thumb Safety
24. Hammer Pin
25. Sear Pin
26. Ejector Pin
27. Magazine Release
28. Magazine Catch Spring
29. Magazine Catch Lock
30. Grip (x2 Left/Right)
31. Grip Screw Bushing (x4)
32. Grip Screw (x4)
33. Disconnecter
34. Sear
35. Hammer
36. Hammer Strut Pin
37. Hammer Strut
38. Mainspring Cap
39. Mainspring / Hammer Spring
40. Mainspring Cap Retention Pin
41. Mainspring Housing Pin Retainer
42. Mainspring Housing
43. Beavertail Grip Safety
44. Sear Spring
45. Trigger

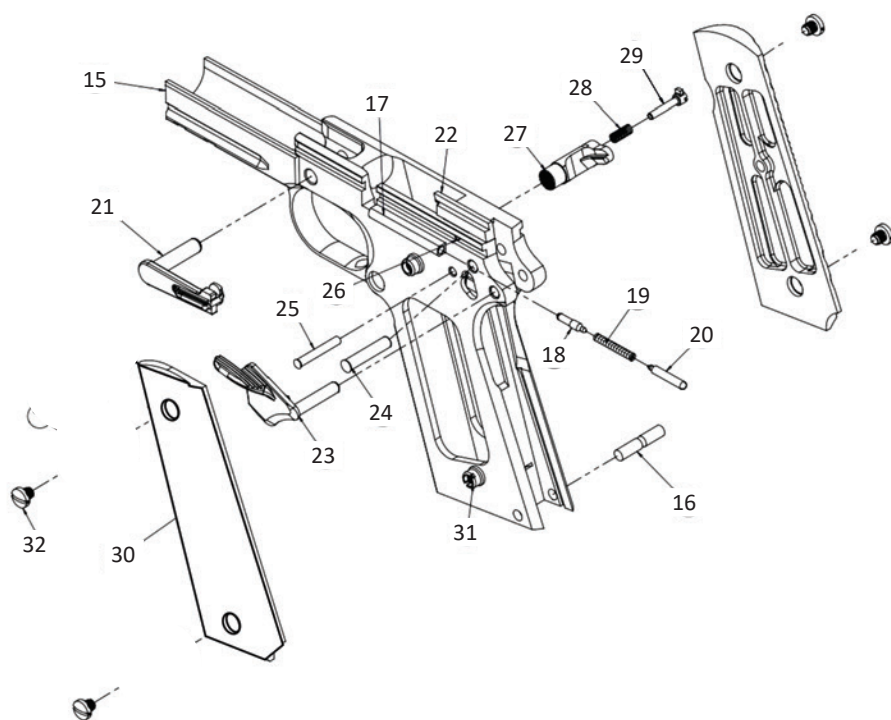
SLIDE ASSEMBLY

1. Slide
2. Voodoo Match Grade Barrel
3. Barrel Bushing
4. Barrel Link
5. Barrel Link Pin
6. Guide Rod
7. Recoil Spring
8. Recoil Spring Plug
9. Firing Pin Stop
10. Firing Pin
11. Firing Pin Return Spring
12. Extractor
13. Rear Sight
14. Front Sight



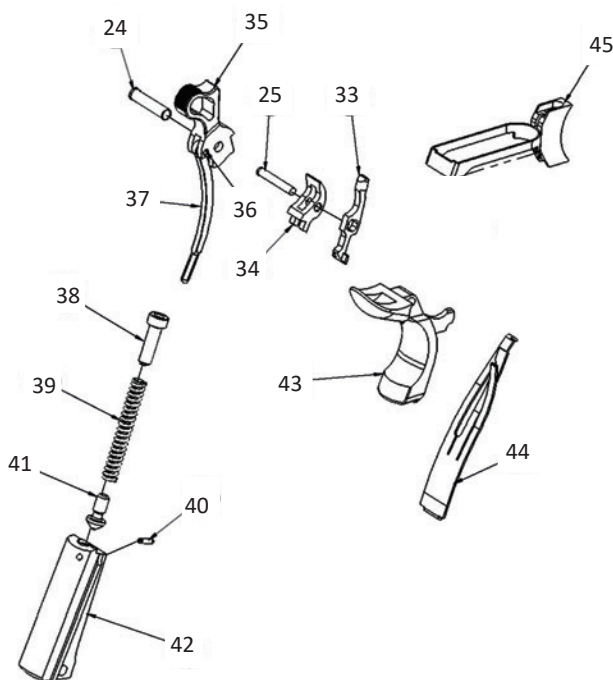
FRAME ASSEMBLY

- | | |
|----------------------------|-----------------------------|
| 15. Frame | 26. Ejector Threaded Pin |
| 16. Mainspring Housing Pin | 27. Magazine Release |
| 17. Plunger Tube | 28. Magazine Catch Spring |
| 18. Slide Stop Plunger | 29. Magazine Catch Lock |
| 19. Plunger Tube Spring | 30. Grip (x2 Left/Right) |
| 20. Safety Plunger | 31. Grip Screw Bushing (x4) |
| 21. Slide Stop | 32. Grip Screw (x4) |
| 22. Ejector | |
| 23. Thumb Safety | |
| 24. Hammer Pin | |
| 25. Sear Pin | |



TRIGGER GROUP & MAINSPRING ASSEMBLY

- | | |
|---|-----------------------------|
| 24. Hammer Pin (also on frame assembly) | 42. Mainspring Housing |
| 25. Sear Pin (also on frame assembly) | 43. Beaver Tail Grip Safety |
| 33. Disconnecter | 44. Sear Spring |
| 34. Sear | 45. Trigger |
| 35. Hammer | |
| 36. Hammer Strut Pin | |
| 37. Hammer Strut | |
| 38. Mainspring Cap | |
| 39. Mainspring / Hammer Spring | |
| 40. Mainspring Cap Retention Pin | |
| 41. Mainspring Housing Pin Retainer | |





HANDGUN OWNERSHIP RECORD

INSTRUCTION:

Record the (1) model, (2) serial number, (3) date of purchase, (4) identity of seller and buyer, (5) and price paid. This manual should be transferred with the handgun as part of every sale or transfer in ownership.

MODEL:

SERIAL NUMBER:

DATE OF PURCHASE:

SELLER:

BUYER:

PRICE PAID:



VUDOO
GUN WORKS



Voodoo Gun Works

4616 S. Beehive Dr. Ste. 10

Saint George, UT 84790

info@vudoogunworks.com